

Jurkat Nuclear Extract

Description: Cultured Jurkat cells are harvested by centrifugation and sonicated in buffer containing protease inhibitors and detergents. Total protein is estimated by Lowry's method. 200 µg of Jurkat nuclear extract in 50 µl of buffer. Concentration 4 mg/ml. Frozen solution.

For Use: Add 1 µl of Laemmli's sample loading buffer to 5 µl of nuclear extract and boil for 3-5 minutes to reduce the preparation.

Note: Load 20 µg per lane for immunoblot analysis. Sufficient product is given for 10 lanes.

Applications: This nuclear extract is recommended as a Western blot standard to localize target proteins, to detect differential post-translational modifications, for studying DNA binding proteins such as transcription factors.

Storage: -20° C

Note: Store as 5 µl aliquots to avoid freeze-thaw cycles.

Cell Line: Jurkat, normal

Ordering Information

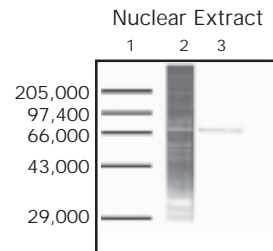
Product	Size	New Cat #	Old Cat #	Price (Rs)
Jurkat Nuclear Extract	200 µg/ 50 µl	105369	ER25	1650

HeLa Nuclear Extract

Description: Cultured HeLa cells are harvested by centrifugation and sonicated in buffer containing protease inhibitors and detergents. Total protein is estimated by Lowry's method. 200 µg of HeLa nuclear extract in 50 µl of buffer. Concentration 4 mg/ml. Frozen solution.

For Use: Add 1 µl of Laemmli's sample loading buffer to 5 µl of nuclear extract and boil for 3-5 minutes to reduce the preparation.

Note: Load 20 µg per lane for immunoblot analysis. Sufficient product is given for 10 lanes.



Lane 1: Protein Molecular Weight Marker

Lane 2: Proteins in a Nuclear Extract on SDS-PAGE

Lane 3: Immunoblotting with a specific antibody

Applications: This nuclear extract is recommended as a Western Blot standard to localize target proteins, to detect differential post-translational modifications, for studying DNA binding proteins such as transcription factors.

Storage: -20° C

Note: Store as 5 µl aliquots to avoid freeze-thaw cycles.

Cell Line: HeLa, normal

Ordering Information:

Product	Size	New Cat #	Old Cat #	Price (Rs)
HeLa Nuclear Extract	200 µg/ 50 µl	105370	ER26	1650

Jurkat Cell Lysate; Normal

Description: Cultured Jurkat cells are harvested by centrifugation and lysed in buffer containing protease inhibitors. Cell lysate is sonicated and total protein estimated by Lowry's method.

200 µg of Jurkat cell lysate in 100 µl of Laemmli's sample loading buffer (0.125 M Tris-HCl pH6.8, 0.8% SDS, 4% glycerol, 2% BME and 0.004% bromophenol blue). Cell lysate provided is sufficient for 10 lanes.

Note: Suggested working concentration for western blot is 20 µg/lane.

Applications: This cell lysate is recommended as a western blot standard, where proteins are expressed at levels that are detectable using standard western blotting procedures and chemiluminescent or colorimetric detection.

Storage: -20° C

Note: Store as 10 µl aliquots to avoid freeze-thaw cycles.

Cell line: Jurkat, normal

Ordering Information:

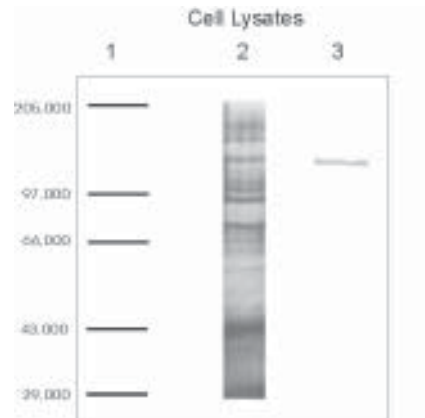
Product	Size	New Cat #	Old Cat #	Price (Rs)
Jurkat Cell Lysate; Normal	200 µg/ 100 µl	105371	ER27	1100

HeLa Cell Lysate; Normal

Description: Cultured HeLa cells are harvested by centrifugation and lysed in buffer containing protease inhibitors. Cell lysate is sonicated and total protein estimated by Lowry's method.

200 µg of HeLa cell lysate in 100 µl of Laemmli's sample loading buffer (0.125 M Tris-HCl pH6.8, 0.8% SDS, 4% glycerol, 2% BME and 0.004% bromophenol blue). Cell lysate provided is sufficient for 10 lanes.

Note: Suggested working concentration for western blot is 20 µg/lane.



Lane 1: Protein Molecular Weight Marker

Lane 2: Proteins in a cell lysate on SDS-PAGE

Lane 3: Immunoblotting with a specific antibody

Applications: This cell lysate is recommended as a western blot standard, where proteins are expressed at levels that are detectable using standard western blotting procedures and chemiluminescent or colorimetric detection.

Storage: -20° C

Note: Store as 10 µl aliquots to avoid freeze-thaw cycles.

Cell line: HeLa, normal.

Ordering Information:

Product	Size	New Cat #	Old Cat #	Price (Rs)
HeLa Cell Lysate; Normal	200 µg/ 100 µl	105372	ER28	1100