

New GMO Detection of Crop Service

Description: Genetically Modified Organisms (GMOs) are organisms whose genetic material has been altered using recombinant DNA techniques, to generate both new and expendable traits. Precise tests for GMO material are needed to detect the presence of unwarranted GMOs and quantify the percentage composition of GMO material. European Commission requires that foods in which >0.9% content is derived from GMOs be specifically labeled as such. Effective control and enforcement of regulations is not possible without extensive, comparable and reliable tests and detection methods in place.

Unlike the one-dimensional approach towards identification, ours is a multidimensional, faster and cost-effective technique. A multiplex Polymerase Chain Reaction (PCR) system has been developed for the simultaneous detection of various target loci in genetically modified Cotton, Maize, Rice and Soya bean.

The Multiplex PCR system consists of primer pairs designed to amplify various distinct regions of the incorporated transgenes in the respective genomes, as well as an endogenous gene, included as an internal control to assess the efficacy of all reactions.

Highlights:

- Single step, effective and simple protocol for identification of foreign gene contamination.
- Multiplex PCR system consists of primer pairs designed to amplify various distinct regions.
- Feasible, sensitive, and ready to be used in GMO traceability for other GMO crops as well.
- Fast and reliable service
- Detailed service report with relevant photographs

Deliverables:

1. Final and detailed Report containing the details of the GMO identification/detection.
2. Relevant data and photographs

Delivery time:

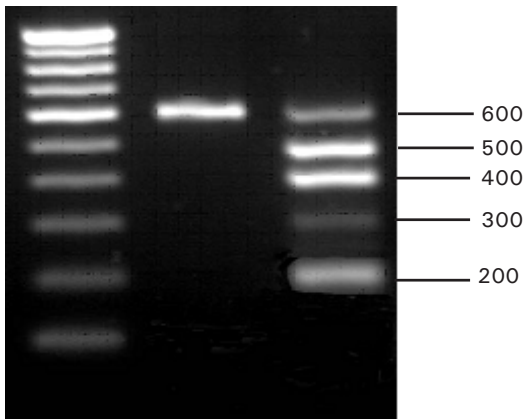
Detection of GMO contamination upto 5 samples: 3 weeks

Ordering Information:

Product	Size	Cat #
GMO Detection of Crop Service	upto 5 samples	117775

Service Tax as applicable will be charged extra

Note: Please Contact geneiservice@sanmargroup.com



Lane 1 : 100 bp ladder
Lane 2 : Non GMO plant DNA with internal control primers
Lane 3 : GMO plant DNA with 5 sets of primers

Figure: Amplified product(s) for GMO detection using specific primers

CUSTOM SERVICES