

New cDNAdirect™ Kit

Description: cDNAdirect™ is an optimized kit for synthesizing first-strand cDNA directly from mammalian cells in culture without first isolating RNA. The resulting first-strand cDNA is ready to be used in cloning, RT-PCR, Real time PCR and other downstream applications. In cDNAdirect™ Kit, cells are first washed with PBS to remove cell culture medium, extracellular and intracellular material released by living, dead and lysed cells. Cells are then incubated with specially designed lysis buffer at 75°C to rupture the cells and inactivate all the endogenous RNases. Following a DNase treatment to degrade the genomic DNA the cell lysate is ready for reverse transcription and PCR by one-step / two step method.

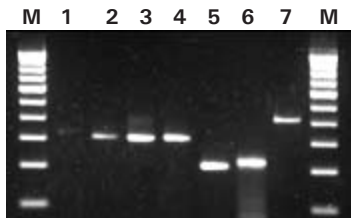
Applications:

- RT-PCR
- Real-time PCR
- Microarray
- Differential gene expression analysis

Highlights:

- No RNA isolation or purification required.
- Kit is optimized for synthesizing cDNA from small cell samples.
- Generates high quality cDNA for use in a variety of downstream applications.
- Compatible with wide range of mammalian cell types.
- cDNA synthesized is free of genomic DNA contamination.
- Rapid and simple procedure to recover cDNA in 30 min.
- Rare transcripts can be detected.
- Simple Protocol

The kit provides sufficient reagents for 25 reactions.



RT-PCR amplified products of different genes in NIH3T3 cell lines using the cDNAdirect™ Kit.

- Lane M** : 100bp ladder
- Lane 1** : 326 bp fragment of RXRb gene
- Lane 2** : 305 bp fragment of CASP9 gene
- Lane 3** : 304 bp fragment of p53 gene
- Lane 4** : 309 bp fragment of c-myc gene
- Lane 5** : 208bp fragment of PCNA gene
- Lane 6** : 223 bp fragment of GAPDH gene
- Lane 7** : 405bp fragment of β -actin gene

Material provided:

1. 10XPBS
2. cDNAdirect™ Lysis Buffer
3. DNaseI
4. cDNAdirect™ RT mix
5. AMV Reverse Transcriptase
6. RNasin
7. Random Hexamer
8. Positive RNA control
9. Positive RNA primer pair
10. Nuclease free water

Storage: -20°C.
PBS at 4°C.

Ordering Information:

Product	Size	Cat #
cDNAdirect™ Kit (20 reactions)	1 Pack	117683



RT-PCR amplified products of β -actin gene from different cell concentrations of HeLa and MCF-7 cell lines using effective cDNA™ direct analyzed on 1% agarose gel.

- M. 100bp DNA ladder
- 1. 350 bp fragment of β -actin gene from 800 cells (HeLa)
- 2. 350 bp fragment of β -actin gene from 400 cells (HeLa)
- 3. 350 bp fragment of β -actin4 gene from 200 cells (HeLa)
- 4. Negative RT (HeLa)
- 5. Positive RT (HeLa)
- 6. 350 bp fragment of β -actin gene from 800 cells (MCF-7)
- 7. 350 bp fragment of β -actin gene from 400 cells (MCF-7)
- 8. 350 bp fragment of β -actin gene from 200 cells (MCF-7)
- 9. Negative RT (HeLa)