

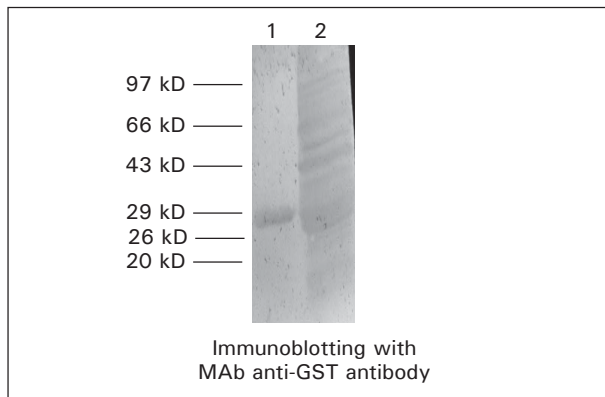
## Monoclonal Antibodies

### Monoclonal Anti-Glutathione-S-transferase (GST) Clone # 1A6B11

**Description:** This antibody was produced using purified recombinant Glutathione-S-transferase (GST) protein as immunogen. The antibody recognizes GST as fusion protein tag from several species. The product recognizes native as well as denatured reduced forms of purified and fused GST applying immunoblotting, dot blotting and ELISA. This antibody is of IgG1 isotype.

Working dilution in range of: 1:100-1:500 by ELISA

1:100-1:1000 by immunoblotting using purified recombinant GST or lysate of induced bacteria expressing GST



Lane 1 : 20 µg pure GST  
Lane 2 : Crude Lysate of GST expressing bacteria

#### Ordering Information:

Product	Size	Cat #
Monoclonal Anti-Glutathione-S-transferase (GST) Clone # 1A6B11	0.5 ml	105644

### Monoclonal anti-β-Galactosidase (β-Gal) Clone # 6C11D2

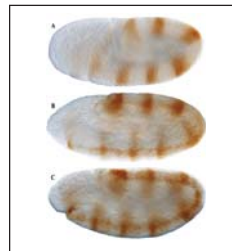
**Description:** This antibody is produced using β-D-Galactosidase from *E. coli* as immunogen. This antibody may be used for the detection of β-Galactosidase expressed by the *E. coli* lac z gene encoded in cloned gene sequences and serves as an indicator for fusion proteins. It is reactive in immunoblotting, as well as immunocytochemistry. Soluble β-Galactosidase may be detected by this antibody using ELISA or dot blot techniques. This antibody is of IgG1 isotype.

Working dilution in the range of:

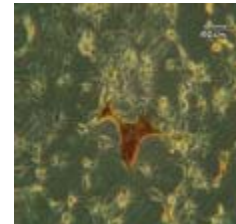
1:100-1:25,000 by ELISA

1:100-1:1000 by immunoblotting using denatured reduced *E. coli* β-Galactosidase

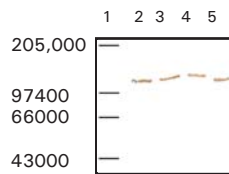
1:100-1:1000 by immunocytochemistry



*Drosophila* embryos carrying ftz-lacZ marker labelled with anti-β-Gal



Immunostaining of β-Gal transfected cells with 6C11D2



Immunoblotting: with various dilutions of anti β-gal Mab Ag Concentration 1 µg/Lane

Lane 1: Protein Molecular Weight Marker High Range  
Lane 2: 1:500 Dilution.  
Lane 3: 1:1000 Dilution  
Lane 4: 1:2000 Dilution  
Lane 5: 1:5000 Dilution

#### Ordering Information:

Product	Size	Cat #
Monoclonal anti-β-Galactosidase (β-Gal) Clone # 6C11D2	0.5 ml	105932