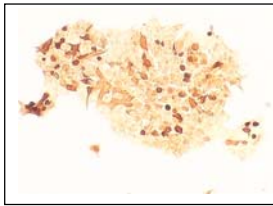


GeNei™ Anti-Luciferase MAb

Description: GeNei™ Anti-Luciferase MAb is produced using firefly Luciferase as immunogen. This antibody may be used in the detection of Luciferase 'reporter gene' in cloned gene sequences. It is reactive in immunoblotting, immunocytochemistry as well as in ELISA techniques. This antibody is of IgG1 isotype.

Working dilution is at least:

- 1:3000 by ELISA
- 1:100 - 1:500 by immunocytochemistry
- 1: 2 by immunoblotting



Transfected COS-7 cells immuno stained for Luciferase

Ordering Information:

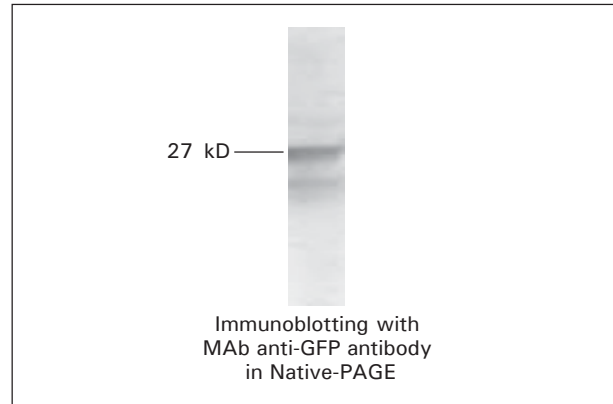
Product	Size	Cat #
GeNei™ Anti-Luciferase MAb	0.5 ml	107550

Monoclonal Anti-Green Fluorescent Protein (GFP) Clone # 1B3A8

Description: This antibody was produced using purified native GFP as immunogen. The antibody recognizes GFP (27 kD) using ELISA, immunohistochemistry, immunoprecipitation and immunoblotting under **non-denaturing conditions**. This antibody is of IgG1 isotype.

Working dilution is at least:

- 1:100 - 1:1000 by ELISA
- 1:100-1:1000 by immunocytochemistry
- 1:100-1:1000 by immunoblotting
- 1:2-1:1000 by immunoprecipitation



Ordering Information:

Product	Size	Cat #
Monoclonal Anti-Green Fluorescent Protein (GFP) Clone # 1B3A8	0.5 ml	105645