

Nuclear Extracts & Cell Lysates (Western Blot Controls)

Jurkat Nuclear Extract

Description: Cultured Jurkat cells are harvested by centrifugation, lysed in hypotonic buffer with detergents and nuclear proteins extracted from the nuclei in buffer containing protease inhibitors. Total Protein is estimated by Lowry's method.

Jurkat Nuclear Extract provided is sufficient for 10 lanes.

Note: Load 50 µg per lane for immunoblot analysis. Sufficient product is given for 4 lanes.

Applications: This nuclear extract is recommended as a Western blot standard to localize target proteins, to detect differential post-translational modifications, for studying DNA binding proteins such as transcription factors.

Storage: -20°C

Note: Store as aliquots to avoid freeze-thaw cycles.

Cell Line: Jurkat, normal

Ordering Information:

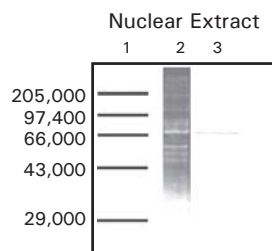
Product	Size	Cat #
Jurkat Nuclear Extract	200 µg	105369

HeLa Nuclear Extract

Description: Cultured HeLa cells are harvested by centrifugation, lysed in hypotonic buffer with detergents and nuclear proteins extracted from the nuclei in buffer containing protease inhibitors. Total Protein is estimated by Lowry's method.

HeLa Nuclear Extract provided is sufficient for 10 lanes.

Note: Load 50 µg per lane for immunoblot analysis. Sufficient product is given for 4 lanes.



Lane 1: Protein Molecular Weight Marker

Lane 2: Proteins in a Nuclear Extract on SDS-PAGE

Lane 3: Immunoblotting with a specific antibody

Applications: This nuclear extract is recommended as a Western Blot standard to localize target proteins, to detect differential post-translational modifications, for studying DNA binding proteins such as transcription factors.

Storage: -20°C

Note: Store as aliquots to avoid freeze-thaw cycles.

Cell Line: HeLa, normal

Ordering Information:

Product	Size	Cat #
HeLa Nuclear Extract	200 µg	105370