

Jurkat Cell Lysate; Normal

Description: Cultured Jurkat cells are harvested by centrifugation and lysed in buffer containing protease inhibitors. Cell lysate is sonicated and total protein estimated by Lowry's method.

Cell lysate provided is sufficient for 4 lanes.

Note: Suggested working concentration for western blot is 50 µg/lane.

Applications: This cell lysate is recommended as a western blot standard, where proteins are expressed at levels that are detectable using standard western blotting procedures and chemiluminescent or colorimetric detection.

Storage: -20°C

Note: Store as aliquots to avoid freeze-thaw cycles.

Cell line: Jurkat, normal

Ordering Information:

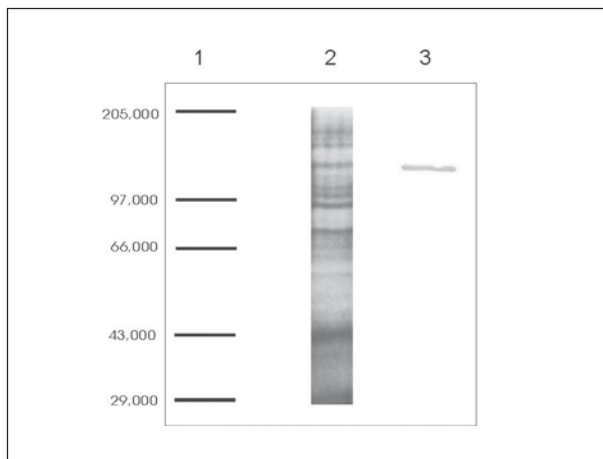
Product	Size	Cat #
Jurkat Cell Lysate; Normal	200 µg	105371

HeLa Cell Lysate; Normal

Description: Cultured HeLa cells are harvested by centrifugation and lysed in buffer containing protease inhibitors. Cell lysate is sonicated and total protein estimated by Lowry's method.

Cell lysate provided is sufficient for 4 lanes.

Note: Suggested working concentration for western blot is 50 µg/lane.



Lane 1: Protein Molecular Weight Marker

Lane 2: Proteins in a cell lysate on SDS-PAGE

Lane 3: Immunoblotting with a specific antibody

Applications: This cell lysate is recommended as a western blot standard, where proteins are expressed at levels that are detectable using standard western blotting procedures and chemiluminescent or colorimetric detection.

Storage: -20°C

Note: Store as aliquots to avoid freeze-thaw cycles.

Cell line: HeLa, normal.

Ordering Information:

Product	Size	Cat #
HeLa Cell Lysate; Normal	200 µg	105372